

**HORSEMAN**

Digital View Camera w/Fine Adjustment Controls

# *Axella S*



# HORSEMAN *Axella S*

The Horseman Axella-S is a L-shaped view camera which enables camera movements by supporting DSLR cameras, Mirrorless cameras, Medium-format cameras and Digital camera backs etc. Four independent camera movements, Tilt, Shift, Swing and Rise/Fall, are available both at the front side (lens) and the back side (sensor). A fine focus adjusting control is installed at the front side, as well as a fine shift adjusting control at the back side.

For compatibility with various cameras, the corresponding mounts are provided as follows:

- **T mount adapter**

For Canon EF, Nikon F and Pentax K mount cameras, use T mount adapter with each corresponding mounts.

- **Sony E, Micro Four-Thirds adapter**

Adapters for Sony E mount and Micro 4/3 mount are available.

- **Adapter for Medium-format cameras**

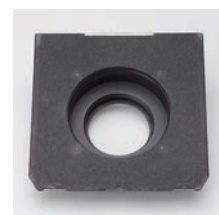
We also have special adapters available for Pentax 645Z/D, Mamiya PhaseOne D645, Hasselblad/X1D, Fujifilm GFX50s.

- **Adapter for Digital Back**

Available also for Phase One Mamiya mount and Hasselblad V/H mount digital backs.

## Linhof standard Lens Panel

Lenses are attached with Linhof standard lens panels. This includes large-format camera lenses as well. A Rodagon lens can be attached with the Linhof standard panel special for Rodagon(Optional).



Lens Panel for Rodagon

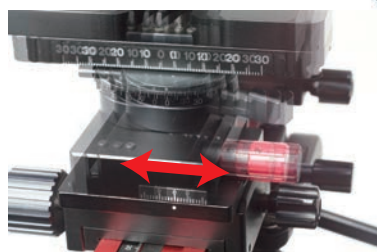


## Monorail

The 250mm Monorail is supplied as standard equipment. An optional 150mm and 200mm monorails are also available subject to your choice. A red anodized rail is standard, but a traditional black rail can be also provided upon request.

## Fine shift adjustment

The Micro Drive System allows up to 5mm of fine adjustment left-and rightward.

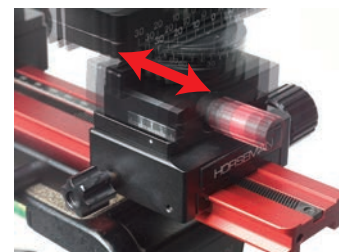


## Made in Japan

Horseman Axella-S is manufactured and assembled with all Japan-made parts under the strict quality control according to the rigid production standard.

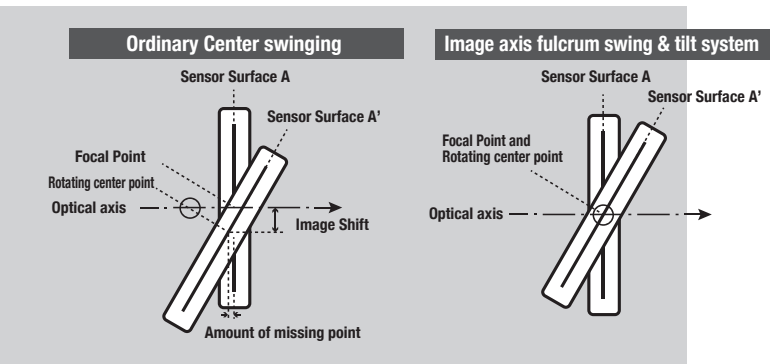
## Fine focus adjustment

The Micro Drive System allows up to 5mm of fine adjustment back and forth.



## Image axis fulcrum swing & tilt system

The L shaped standards of the Horseman Axella-S provides a center pivot or fulcrum for all camera movements. Even with rear Full Camera Movement, it prevents defocusing of the image center or the displacement of a composition. As no image re-composition or refocusing\*1) is needed, this greatly aids speed and efficiency.

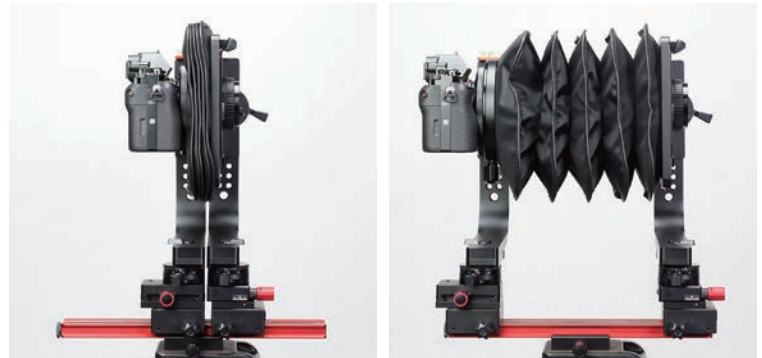


\*1) When shooting A with Tilt movement and its axis is displaced from the sensor position, the image will be defocused and deformed as in the picture B. Then, readjustment is needed.

## Length of Flange Back 41mm\*

The Length of the flange back of the Horseman Axella-S is shortened to 41mm.※ Using a digital camera back, you can utilize a digital lens such as the HR Digaron S 23mm. This enables Wide-angle photography, now possible with this type of view camera ever. Also, when used with a T mount adapter, up to a 210mm lens can be used with extension of the bellows.

※when attached with Hasselblad V mount



## A switch between vertical and horizontal positions can be made quite easily by a one-touch operation!

The revolving function allows switching from vertical to horizontal position and vice versa very smoothly. Just turn the knob on the camera mount by one-touch.



## Light weight and compact design

In addition to the exceptional sturdiness and durability of the metallic material, the Horseman Axella-S is extremely compact. Gross weight is only 2.7kg. It can be stored in a compact way by removing the rail.

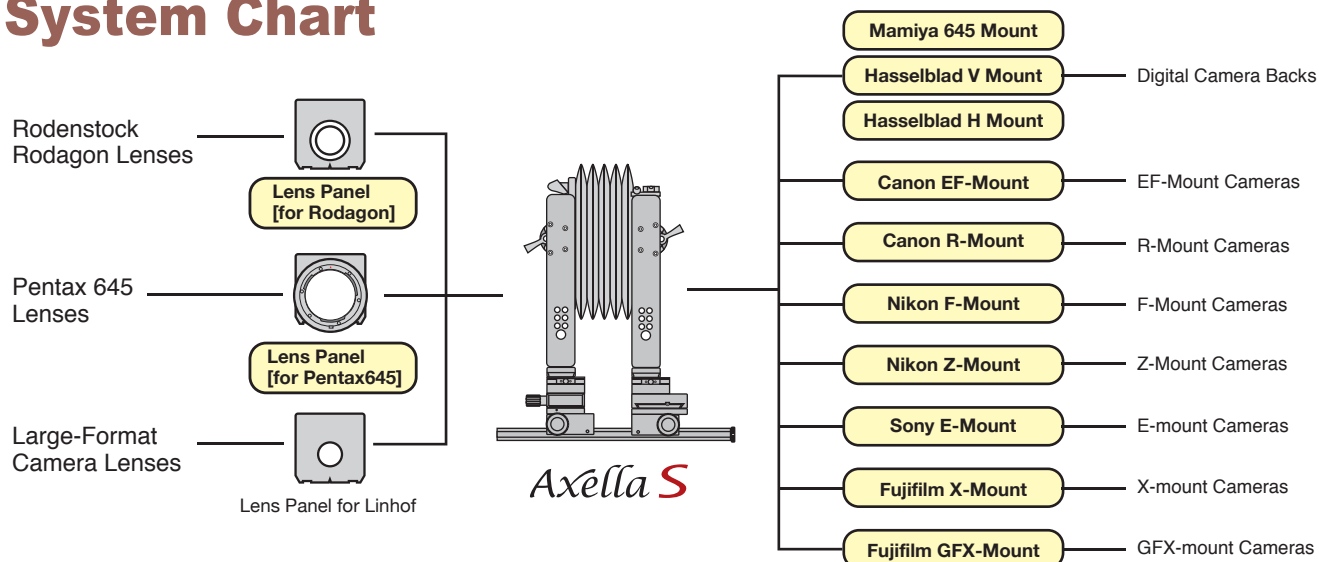
## Abundant camera movement amounts

The Horseman Axella-S has abundant front and back camera movement amounts :

- Tilt:  $\pm 45^\circ$  or over
- Swing:  $\pm 45^\circ$  or over
- Rise / Fall: 30mm each direction
- Shift: 30mm each direction

Utilizing a large-format camera lens having a generous image circle, the Horseman Axella-S enables new and creative expression.

# System Chart



## Technical data

Type	Monorail module camera	
Material	Aluminum	
Focus adjustment	By rack-and-pinion on the monorail / tremor knob	
Lens mount	Linhof standard panel	
Movements	Rise / Fall	30mm each
	Shift	30mm each
	Swing	±45° or over
	Tilt	±45° or over
Monorail	250mm(standard) Option: 150mm, 200mm	
Base	Compatible with ARCA SWISS	
Size	310 (H) x 210 (W) x 250 (L) mm	
Weight	2.7kg	



## Products

Product code	Product name	Jan
512388	Horseman Axella S Camera Body	4962420231777
512479	Horseman Axella S [Canon EF]	4962420231883
512480	Horseman Axella S [Nikon F]	4962420231890

### Camera Mount Kits

512485	Axella S Sony E Mount Kit	4962420231944
512486	Axella S Fuji GFX Mount Kit	4962420231951
512494	Axella S Fuji X Mount Kit	4962420233047
512487	Axella S Canon R Mount Kit	4962420231968
512488	Axella S Nikon Z Mount Kit	4962420231975
512489	Axella S Hasselblad X1D Kit	4962420231982
512490	Axella S Pentax 645 Kit	4962420231999
512491	Axella S DB Hasselblad V Kit	4962420233016
512492	Axella S DB Hasselblad H Kit	4962420233023
512493	Axella S DB Mamiya 645 Kit	4962420233030

### Camera Mounts

512390	Axella S Camera Mount for Sony E	4962420231791
512391	Axella S Camera Mount for Fuji GFX	4962420231807
512495	Axella S Camera Mount for Fuji X	4962420233054
512392	Axella S Camera Mount for Hasselblad X1D	4962420231814
512496	Axella S Camera Mount for Pentax 645	4962420233061
512393	Axella S Adapter DB for mamiya	4962420231821
512394	Axella S Adapter DB for Hasselblad V	4962420231838
512395	Axella S Adapter DB for Hasselblad H	4962420231845
512481	Axella S Camera Mount for Canon EF	4962420231906
512482	Axella S Camera Mount for Nikon F	4962420231913
512483	Axella S Camera Mount for Canon R	4962420231920
512484	Axella S Camera Mount for Nikon Z	4962420231937

### Lens Panels

512397	Axella S Lens Panel for Rodagon[M39]	4962420231869
512398	Axella S Lens Panel for Pentax 645	4962420231876

\*Attention  
Each Axella S Camera Mount Kit doesn't include lens board or lens mount.  
Axella S can be used with Linhof lens standard board with lens

**KPI** Kenko Professional Imaging Co., Ltd

5-68-10 Nakano, Nakano-ku, Tokyo 164-0001, Japan  
E-mail : info@kenko-pi.co.jp

<http://www.kenko-pi.co.jp/horseman/e/>